

"MONTEREY PARK'S TRIBUTE TO THE BEAUTY OF THE JAPANESE CULTURE"

# CHERRY BLOSSOM FESTIVAL

APRIL 11-12, 2026

**SATURDAY 11:00 AM TO 7:00 PM SUNDAY 11:00 AM TO 6:00 PM**

**BARNES PARK**

350 S. McPherrin Avenue  
Monterey Park, CA 91754

**FOR MORE INFORMATION:**

Call (626) 307-1388  
Visit [www.MontereyPark.ca.gov](http://www.MontereyPark.ca.gov)  
Web search  
"Cherry Blossom Festival"

**FREE SHUTTLE SERVICE:**

Langley Senior Center  
400 W. Emerson Avenue  
Ynez Elementary School  
120 S. Ynez Avenue  
Repetto Elementary School  
650 S. Grandridge Avenue

**COME SUPPORT YOUR LOCAL  
GROUPS & ORGANIZATIONS:**

- Foods with Asian Flair • Handmade Crafts
- Kids Zone • Tea Ceremony • Taiko Drums
- Traditional Japanese Dancing • Martial Arts
- Japanese Musical Entertainment
- Origami Demonstration & Classes
- Ikebana Display & Instructional Classes
- Mochi Making • Cultural Exhibits
- Asayoru Maid Cafe





# MONTEREY PARK CHERRY BLOSSOM FESTIVAL 2026

thank you to our generous

## SPONSORS & DONORS

### STAGE SPONSOR

Vickie Sill-Ohashi and Wade Ohashi

### BRONZE SPONSORS

Hālau Hula Moani'a'ala Anuhea

Fugetsu-Do

David and Kathy Ikeda

Grant and Colleen Ishibashi

Gary Kanemoto

Karen Ogawa

Thomas Wong and Travis Kaya

Oran Yamanaka

### FRIENDS OF CHERRY BLOSSOM

Bando Hidesomi

Sandy Hidalgo

Higashi Honganji ABA

Lila Iizumi-Leong

Mrs. Matsumoto-Hirofumi Kai

Gwen Kishida

In Memory of Kathy Shishima

Carol Sullivan

Shihoku Tatsugawa

### IN-KIND DONATIONS

Grant Ishibashi

Ralphs Supermarket  
Rosa Gonzalez, Store Director

WE WOULD APPRECIATE  
YOUR PATRONAGE  
OF OUR SPONSORS  
AND DONORS.





**GENERAL  
CONTRACTING  
SERVICES**

**BRETT ISHIBASHI**  
323-497-3191



**STONEBRIDGE**  
CONSTRUCTION SERVICES

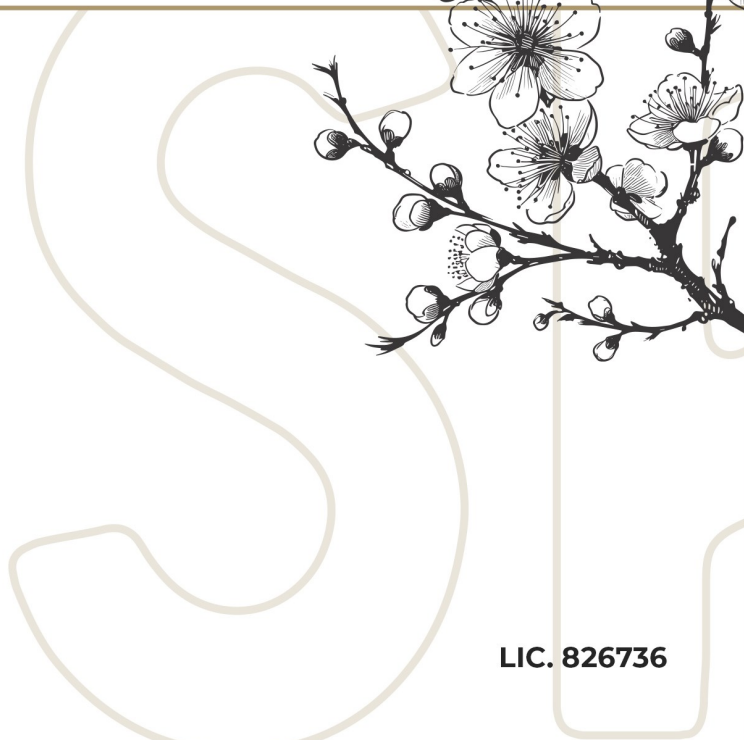
LIC. 1150793



**STONEBRIDGE**  
PLUMBING COMPANY

**JASON ISHIBASHI**  
323-896-7217

LIC. 826736





The City of Monterey Park

# Cherry Blossom Festival

26th Anniversary

Welcome!

The Cherry Blossom Festival Committee is delighted to welcome you to the 2026 Festival, a celebration of Japanese and Asian Pacific Islander culture and history.

Monterey Park began holding a Cherry Blossom Festival in the early 1970s. Discontinued shortly after, the Cherry Blossom Festival was resurrected by a group of community volunteers in 1997. Their efforts were realized through the successful reestablishment of the Cherry Blossom Festival in April 1998.

With our 26th Anniversary upon us, our thanks to everyone who participates in and supports this community event.

Sincerely,  
2026 Cherry Blossom Festival Committee

## CHERRY BLOSSOM FESTIVAL COMMITTEE

### Chairperson:

Karen Ogawa

### Performance:

Sandy Hidalgo

Guy Higashi

David Ikeda

Gary Kanemoto

Travis Kaya

### Exhibits & Demonstrations:

Colleen Ishibashi

### Craft, Commercial and Community Booths:

Gwen Kishida

### Food Court:

Karen Ogawa

### Kids Crafts:

Skye Shishima

### Publicity and Marketing:

Travis Kaya

### Poster / T-Shirt Design:

Kurt Ogawa

### Program:

Gwen Kishida

### Volunteers and Information:

Lila Leong-lizumi

Carol Sullivan

Shihoko Tatsugawa

### Public Relations:

Vickie Sill-Ohashi



*The Cherry Blossom Festival Committee*

*extends its deepest appreciation to*

**MARGARET ENDO**

*for her 26 years of dedication to and support of  
the Monterey Park Cherry Blossom Festival.*

*Thank you Margaret!*



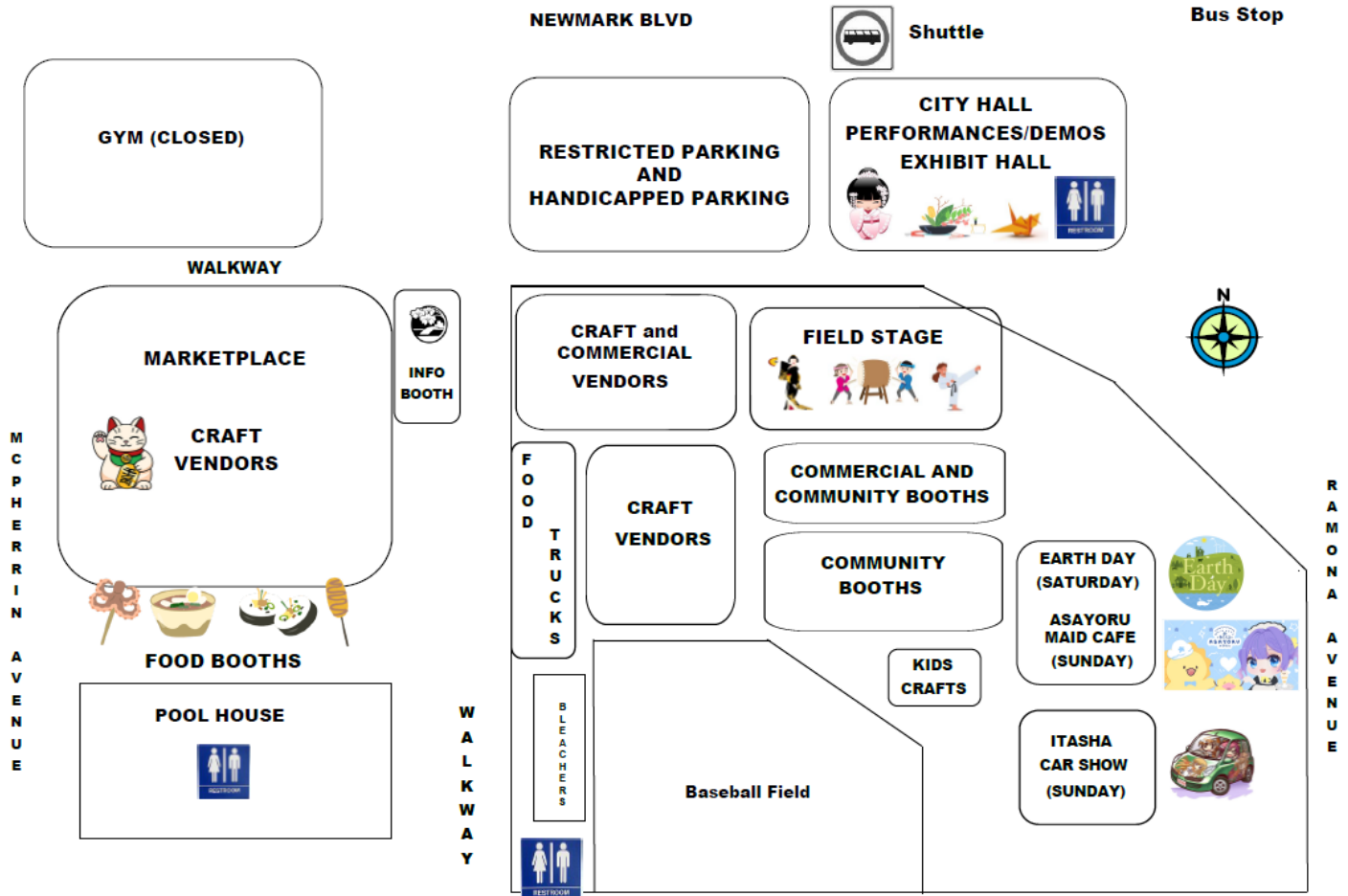
# Where can you see Cherry Blossom Trees?

City Hall, 320 W. Newmark Avenue, Monterey Park  
Barnes Park, 350 S. McPherrin Avenue, Monterey Park  
Garvey Ranch Park, 781 S. Orange Avenue, Monterey Park  
South Garfield Avenue, Monterey Park



## MONTEREY PARK CHERRY BLOSSOM FESTIVAL MAP

\*\*\* Map Not To Scale \*\*



## Special thanks to

the Performers, Exhibitors, Demonstrators, Vendors, Volunteers, Visitors and Supporters of our Fundraisers who continue to make our Festival a success.

We look forward to working with all of you again !

City of Monterey Park staff, in particular Recreation and Community Services Director Robert Aguirre and Recreation staff Guillermo Chavez, Orlando Muro, Christina Alatorre, Chan Lim, Scott Imaizumi, Cristina Garcia and Michelle Chen.



# SPECIAL MESSAGES



*K. Murota*

## MESSAGE FROM KOSEI MUROTA CONSUL GENERAL OF JAPAN IN LOS ANGELES

It is a great pleasure to extend my warm congratulations on the occasion of the 26th Annual Monterey Park Cherry Blossom Festival.

This festival has a long and meaningful history, uniting people from different backgrounds through cultural performances, exhibits, and shared experiences. The tradition began with the Japanese American community in the 1960s and continues today through the dedicated efforts of the Festival Committee and the City of Monterey Park.

This event embodies the enduring Japan-U.S. friendship, as well as the valued sister-city relationship between Monterey Park and Nachikatsuura, Wakayama Prefecture, Japan. I would like to extend my best wishes to the two Monterey Park students who visited Nachikatsuura last summer through a sister-city exchange. I hope they experienced the warmth of the Japanese people and the beauty of Japan.

The Consulate would like to extend its heartfelt appreciation to all who have devoted their efforts to keeping the spirit of the Monterey Park Cherry Blossom Festival alive and sustaining this meaningful bond between the United States and Japan for future generations to come.



## MESSAGE FROM RILEY BEIGHTLER AND HANNAH NG MONTEREY PARK NACHIKATSUURA SISTER CITY STUDENT AMBASSADORS

Riley Beightler and Hannah Ng are Mark Keppel High School students representing Monterey Park as ambassadors of Monterey Park-Nachikatsuura Sister City Association.

We began our journey completing an application and interview with the association. Before we knew it, we embarked on an 11-day trip to Japan.

Being part of the Nachikatsuura Sister City Program created unforgettable memories. We were able to bond with many people in our short time there and were given the opportunity to build friendships that would last forever. The Sister City Program gave us the opportunity to explore Japan's culture hands on and opened our eyes to the vast world beyond the small pocket of Monterey Park. It was truly an experience of a lifetime. A favorite memory from the trip would have to be the 2025 World Expo in Osaka where 158 different countries from around the world showcased their cultures. It was a genuinely awe-inspiring time to visit each country's exhibit and learn about the cultures from around the globe.

When we met Nachikatsuura's city officials, we shared what life was like as an MKHS student-athlete (Golf and Swim), and as Girl Scouts achieving our Gold Award. We made an impact when we showed them how to create a friendship knot - to represent the friendship between Monterey Park and Nachikatsuura.

**Ryoko Suzuki, one of the founders of the Monterey Park Sister City Association, will also be recognized during the Opening Ceremony.**

# FESTIVAL SPECIAL GUESTS



## IRENE CRUZ

Irene Cruz with a weekend morning anchor and general assignment reporter for ABC7 Eyewitness News. She's a SoCal native and grew up in Irvine, graduating from UC Irvine with a B.A. in Literary Journalism. Before working in Los Angeles, she worked at news stations in San Antonio, Texas; Sacramento, California and Yuma, Arizona.

Irene has been nominated for two regional Emmys and has reported on everything from California wildfires to protests at the state Capitol to deepfake technology.

She's the proud daughter of Filipino immigrants. When she's not reporting you can find her immersed a number of hobbies – 3D printing, piano, science fiction novels, and attending comic-cons.



## KENDYL SAYURI YOKOYAMA

For the past six and 1/2 years, Kendyl Sayuri Yokoyama has performed with the National Touring company of the musical *Hamilton*, playing the lead character, Eliza, for the past year and a half.

Kendyl will sing one song as part of Azuma Kotobuki Kai's set (12:40 p.m. - 1:10 p.m. on Sunday, April 12). She will be dancing and singing "Koko ni Sachi Ari." This is actually a return for Kendyl to the Cherry Blossom Festival stage - 13 years ago, when she was 13 years old, she sang "Sukiyaki" - her first singing performance for the Japanese American community.

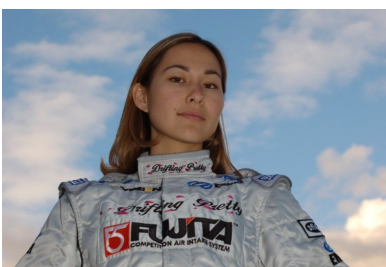


## OLIVER WANG

Oliver Wang is a professor of sociology at CSU-Long Beach and the author of *Cruising J-Town: Japanese American Car Culture*. In 2025, he curated the exhibition, *Cruising J-Town: Behind the Wheel of the Nikkei Community*, for the Japanese American National Museum. Oliver is a regular writer on music, arts and culture for outlets including NPR's *All Things Considered*, the *Los Angeles Review of Books*, *Los Angeles Times*, and KCET's *Artbound*. He has co-hosted the podcasts *Pop Rocket* and *Heat Rocks* and is currently developing a new podcast on the songs of Asian America.

## NADINE SACHIKO HSU

Nadine Sachiko Hsu was one of the first women in the USA to pursue drifting. From 2002-2006, she was a 14 sponsor backed professional racecar driver and one of the only women competing in the Formula Drift Series. Nadine is the founder of *Drifting Pretty* (an organization for the advancement of women in motorsports), stunt doubled in *The Fast & The Furious: Tokyo Drift*, a drift racing instructor, and was a regular competitor in local drifting competitions. Nadine's car is an award-winning race car, winning numerous trophies at both car shows and drift races across California. Her car was most recently featured in *Motor Trend*. Nadine is the author of *Sachiko Goes Racing*, a series of children's books empowering girls and boys to follow their dreams.



# FESTIVAL SPECIAL GUESTS



## FESTIVAL EMCEES: WAYNE KAWAMOTO and SHIN ITO

We are honored to have Wayne Kawamoto and Shin Ito join us as the Cherry Blossom Festival's emcees.

### WAYNE KAWAMOTO - MAGIC WAYNE

A full time, professional magician for the past twenty years, **Wayne Kawamoto** (waynemagician.com) has performed for the Los Angeles Dodgers and Lakers and his client list includes Google, Target and Hollywood's Magic Castle. Wayne is also a YouTube creator with over 100,000 subscribers to his channel [youtube.com/@aboutmagic](https://www.youtube.com/@aboutmagic) and he recently launched a new channel [youtube.com/@greaterwithage](https://www.youtube.com/@greaterwithage). He has been a long-time performer at the Monterey Park Cherry Blossom Festival and always welcomes the opportunity to entertain at the yearly event. Wayne will perform on Saturday, April 11 at 4:45 p.m. on the Field Stage.



### SHIN ITO

Shin is currently the Executive Director for Nikkei Senior Gardens and a long time supporter of the Monterey Park Cherry Blossom Festival. He continues to support the festival in memory of his "idol", "Uncle" Rodney Kageyama.



### ASAYORU MAID CAFÉ

Asayoru Maid Café is a maid-themed restaurant located in Atlantic Time Square, Monterey Park. Though the store was opened in November 2024, we were established in 2021 and have built a steady fanbase over the years.

Check out our social media here: [Website](#) | [Instagram](#) | [TikTok](#) | [Youtube](#)



The concept of maid cafés has been popular in Tokyo, Japan and has been a booming business since 2001, with the goal of bringing cuteness and happiness to everyday life, such as eating tasty meals and enjoying fun conversations with the maids.

Asayoru Maid Café performers appear at many local conventions and are well-known for their high energy j-pop idol/anime song related performances! Asayoru Maid Café's goal in joining this event is to connect with the local community and invite them to experience the "moe" of maid cafes!



On Sunday, April 12, Asayoru Maid Café will present a variety of activities and performances in and around the southern tent and inside City Hall. They will be selling original-themed, self-produced apparel, stickers, keychains and concert lights, but the main attraction is a hand-decorated photo with the maids called a cheki. They will also offer five matsuri-type games to play and try to win prizes. Garage Drydock will present an itasha showcase - cars adorned with custom wraps featuring images from anime, manga and video games. Moe Age! and Strawberry Sunday, Asayoru Maid Café's singing groups, will perform on the Field and City Hall stages.



# PERFORMANCE SCHEDULE

Saturday, April 11, 2026



## FIELD STAGE

- 11:00 a.m. Sage Granada Park United Methodist Church  
Japanese School Taiko Group
- 11:30 a.m. Kimono Fashion Show by Ken Kanesaka
- Noon Opening Ceremony featuring Irene Cruz of  
ABC7, Mayor Elizabeth Yang, City of Monterey  
Park and City officials
- 1:00 p.m. Yuujou Daiko
- 1:30 p.m. Halau Hula Moani'a' ala Anuhea
- 2:15 p.m. David Torres Kempo Karate
- 3:00 p.m. Bando Hidesomi
- 3:30 p.m. Koshin Taiko
- 4:00 p.m. SGV Youth Symphony
- 4:45 p.m. Magic Wayne
- 5:00 p.m. Industry Sheriff's Kendo Dojo
- 5:30 p.m. Kokoro

## CITY HALL COUNCIL CHAMBERS STAGE

- 11:00 a.m. Sunny and Judy Seki: Folk Tales and Stories
- 12:00 p.m. Cruising J-Town with Oliver Wang and  
Nadine Sachiko Hsu
- 1:00 p.m. Nippon Minyo KyoKai by Kotobuki No Kai
- 1:30 p.m. Kyo No Kai: Traditional Japanese Dance
- 2:00 p.m. Ikebana Demonstration by Ikebana Lessons
- 2:30 p.m. Storytime by Judi Li
- 3:00 p.m. Ryujin Taiko
- 3:30 p.m. Vocal Sounds by Gary Jung
- 4:00 p.m. Michelle MaliZaki: Comedian
- 4:30 p.m. Maid Academy Café
- 5:00 p.m. Zen Brush Demonstration by Susan Perry



# PERFORMANCE SCHEDULE

Sunday, April 12, 2026

## FIELD STAGE

- 11:00 a.m. Moe 7Age! from Asayoru Maid Café
- 11:30 a.m. Ryukyukoku Matsuri Daiko
- 12:00 p.m. LA Wu Shu Club Martial Arts Team
- 12:20 p.m. Kizuna Taiko
- 12:40 p.m. Azuma Kotobuki Kai
- 1:10 p.m. Akaoni Daiko
- 2:00 p.m. Phyllis Chang
- 3:00 p.m. TAIKOPROJECT Academy
- 4:00 p.m. Ohana Polynesian Dancers
- 5:00 p.m. ABAsonics

## CITY HALL COUNCIL CHAMBERS STAGE

- 11:00 a.m. Zen Brush Demonstration by Susan Perry
- 12:00 p.m. Ikebana Demonstration by Ikebana Lessons
- 1:00 p.m. Manju Demonstration by Brian Kito of Fugetsu-do
- 2:00 p.m. Stephanie Yanez: J-Pop and Anime Music
- 2:30 p.m. Little Stars Band from Math Clinic Corps
- 3:00 p.m. Urasenke Tea Ceremony
- 3:30 p.m. Traditional Shamisen Japanese Music
- 4:00 p.m. Origami Demonstration by Michael Sanders
- 5:00 p.m. Calvin Yoshitake - Magi Cal
- 5:30 p.m. Strawberry Sunday and Moe 7Age!  
from Asayoru Maid Café



### All Day both Saturday and Sunday:

Rodney Durand, DJ and Sound, City Hall Council Chambers Stage  
DJ Dais, City Hall Courtyard

*Performers and Set Times  
Subject to Change Without Notice*

# PERFORMERS



## ABAsonics

ABAsonics formed in 2018 and is a homegrown band primarily consisting of members of the Los Angeles Homba Hongwanji Buddhist Temple in downtown LA. In other words, they're people who met at temple and formed a band, just for fun. The "ABA" in ABAsonics stands for Adult Buddhist Association, and the band serves an outreach of Nishi ABA. They love to get together and play music, with the hopes of promoting fellowship within their temple and with the larger community.

## AKAONI DAIKO

Akaoni Daiko is a community taiko group based out of the Valley Japanese community center in Sun Valley. The group leader, Michael Naishtut, lived in Japan for 20 years and first studied taiko at the Kodo Juku. He then trained under Miyauchi Yukihiro for 10 years and then formed the international taiko group, Akaoni Daiko in Tokyo. They have performed at various events and festivals including the Kodo Earth celebration fringe stage, Narita Temple taiko festival, OC Japan Fair, Anaheim Gardenwalk, SoCal Anime con and recently returned from performing in Oman. Their regular practices are Sundays from 3:00-6:00 and beginners are welcome! They can provide mobile workshops for schools or companies anywhere!

## AZUMA KOTOBUKI KAI

The Azuma Kotobuki Kai, a branch of the Azuma-Ryu Classical Dance School (Tokyo, Japan), was established in Southern California in 1968 by Madame Sumako Azuma I. The current instructor is Kikusue Azuma who teaches in Ventura and Los Angeles counties, in Honolulu, and two locations on the island of Kaua'i.

While the instructor teaches the classics, she also breaks new ground by incorporating classical dance technique with modern music to help reach the Yonsei, Gosei and younger generations. The purpose of the Azuma Kotobuki Kai is to preserve and promote Japanese culture through the art of Nihon Buyo, or classical Japanese dance.

## BANDO HIDESOMI

Bando Hidesomi has been teaching in the greater Los Angeles area for over 20 years, instructing students from age 3 to their 80s. She started her training under Madame Bando Mitsuhiro, at the age of three. In 1985, she also started training under Madame Bando Hideko, daughter of Grand Master Bando Mitsugoro IX (9th). She trained under the care of headmaster Bando Mitsugoro IX for 4 years while attending Keio University in Tokyo, Japan. She is presently teaching at the Pasadena JCI and in the South Bay area.

Bando Hidesomi and her students have performed at many different venues throughout the years. They also share their passion by participating annually in the Nisei Week Festival, obons held at Zenshuji and Sozenji temples and visiting different nursing homes. She has been the choreographer for the Nisei Week Coronation Ball since 2015. In recent years, she has also had the privilege of introducing Nihon Buyo through lecture demonstrations and events hosted and supported by the Consulate General of Japan in Los Angeles along with presenting lecture demonstrations and workshops at various educational facilities and cultural institutions.

Through Nihon Buyo, Bando Hidesomi wishes to express her feelings of appreciation and respect for all cultures, and hopes her passion for Nihon Buyo will bring love, joy, peace and hope to everyone, creating a bridge of unity between all cultures.



## PHYLLIS CHANG

Phyllis Chang is a Southern California-based singer-songwriter, performer, artist, and educator. She has written and produced contemporary pop/jazz and children's songs and has performed at venues and events nationwide. She is the founder of Pinky Paws Productions and BE Studios, where she teaches music, visual

arts, and English language arts. She works with students of all ages, helping them build creativity, self-expression, and confidence as they pursue their interests in art, music, and writing. Phyllis continues to perform and write songs and is currently developing projects that combine music, storytelling, and art. She also cares deeply about dogs, especially senior rescues and is writing songs and working on a fundraiser for her "Doggy Love" project.

# PERFORMERS

## RODNEY DURAND

Rodney Durand is a Vocalist, guitar player, Events DJ and MC. Since the mid-sixties, he has been in the L.A. music scene, playing in bands, night clubs and numerous other venues. He considers himself blessed to still be able to perform and do the thing he loves the most, play music. He performs with his group 2 or More every other week at the Monterey Park Farmers Market, and DJs and hosts the market on the other weeks.



## HALAU HULA MOANI'A'ALA ANUHEA

Halau Hula Moani'a'ala Anuheha has been performing in the Monterey Park Community for the past 16 years and is proud to say that the Cherry Blossom Festival was one of the first shows performed at that very first year. We have been honored to be invited back every year since then! Under the direction of Kumu Hula Christina Nani Aiu-Quezada, the halau follows the hula lineage of Auntie Ma'iki Aiu-Lake, a very formidable hula lineage in Hawai'i. With a diverse enrollment, the halau, like Hawai'i, welcomes everyone with aloha ....

## INDUSTRY SHERIFF'S KENDO DOJO

Industry Sheriff's Kendo Dojo, formerly the Monterey Park Kendo Dojo, was founded in 2002 by All US Kendo Federation President Arthur Ichiro Murakami Sensei, with support from the Industry Sheriff's Youth Activities League. The charter of the nonprofit organization is to provide a safe, positive environment for youth of the San Gabriel Valley to improve their lives through martial arts. The majority of our members are 8 to 18 years old. The dojo has grown significantly over the years, and is now one of the largest in southern California. Cofounding the dojo is Ted Takafumi Imoto, who is a long time resident of Monterey Park. Our kendo club is free to any youth 8 to 18, and those that go on to higher education receive extended support.

## GARY JUNG

Gary Jung has performed to audiences throughout Southern California for over 35 years, as well as in Japan, Hong Kong and Hawaii. He has appeared in numerous newspaper and magazine articles as well as radio and television. The reason for all of this attention and publicity ... he has been billed as the World's First Asian Elvis Sound-Alike! He will be performing his special tribute to the King of Rock & Roll and those great songs of the 50's and 60's.

## KIZUNA TAIKO

Kizuna Taiko is a unique taiko group for children and young adults with special needs, creating opportunities to learn taiko, express themselves in positive ways, connect with others, and grow self-confidence while having fun. By performing in various events, we would like to promote awareness of various special needs and how much they enjoy taiko together to brighten up their lives. The group has performed at Nishi Hongwanji Obon, Festivals of Human Abilities at Long Beach Aquarium, OC Japan Fair and other community events.



## KOKORO

In Japanese, Kokoro translates to heart, mind and spirit. The band name was chosen to capture the feeling and enjoyment of live band music, and the excitement and energy it brings to the stage and the audience.

The band, Kokoro, was formed in 2010 by a group of friends wanting to bring back the popular Asian dance music scene of the 60's and 70's that use to perform at various venues to high schoolers, college sororities & fraternities, and live music enthusiasts. Currently, the band consists of a diverse group of talented performers from different musical backgrounds ranging from amateur musicians to professional performers that have toured the world. This eclectic group brings to the stage their version of Soul, Pop, Rock, and current popular dance music that you love to hear and remember...their repertoire spans music from the 60's to current chart-topping hits, Motown to Ed Sheeran, Donna Summer to Justin Timberlake, and of course, Earth Wind & Fire.

# PERFORMERS



## KOSHIN TAIKO

Koshin Taiko traces its lineage back to the first professional taiko group in Japan. Oedo Sukeroku Taiko made history with its blend of classical Japanese music, martial arts, and Dance, and its influence can be seen in taiko groups around the world. The late Sensei Etsuo Hongo brought the Oedo Sukeroku style to his own energetic compositions when he founded Koshin Taiko in 1992. In his unique form, powerful and beautiful taiko sounds are created through carefully choreographed movement. This synthesis of powerful sound and graceful movement, along with their visually distinctive Okedou (rope-tightened drums) makes Koshin Taiko one of the most dynamic taiko groups in Los Angeles. Last year Koshin was honored to perform at Japanese Heritage Night at Dodger Stadium and along with Miyavi, the Samurai Guitarist. By incorporating aspects of other styles of drumming while still exploring the rich traditions of Japanese taiko, Koshin continues to live up to the name Hongo Sensei gave it over twenty years ago: Bright Spirit!

## KOTOBUKI NO KAI

Kotobuki No Kai is a traditional Japanese Minyo (folk) dance group established in 1998 and is the Los Angeles Headquarters for Nippon Minyo Kenkyu Kai based in Nagoya Japan. Nippon Minyo Kenkyu Kai is considered one of the largest Minyo dance groups. Kotobuki No Kai has received recognition from the city of Los Angeles and city of Nagoya for their strong Sister City relationship, cultural exchange and for participation and performance in the Nippon Minyo Kenkyu Kai's 50th Anniversary celebration in Japan - the first American group of their school to perform in Japan. Shihan Imoto Hoshun-Jyu Sensei teaches Minyo Odori in the classical Minyo style as well as Shin or new Minyo style. She also teaches Kayo Buyo or dance accompanied by popular Japanese songs. Her students perform throughout Southern California at various venues including the Pacific Asia Museum, Keiro Nursing Home, Minyo Kyokai Show, Kenjin Kyogikai Show, Asian American Expo, various Cherry Blossom festivals and the Little Tokyo Tanabata Festival. Kotobuki No Kai has performed in the Nisei Week Parade Ondo for 15 years.



## KYO NO KAI KABUKI

"Kyo no Kai" is an organization founded and headed by Kabuki actor Nakamura Gankyo (aka Bando Hiroshichiro). The mission of Kyo no Kai is to teach and promote various aspects of traditional Japanese culture with the emphasis on the performance art of Kabuki- ("ka" to act, "bu" to dance, "ki" ability) to people all over the world.

## LA CHINESE WU SHU MARTIAL ARTS TEAM

Wu Shu is China's national sport, largely a performance version of various martial art styles. The team is directed by Coach Ming Qiu, who started training at the Jiang Su Wu Shu academy and won many gold medals in the Chinese championships. In 1995, she moved to Monterey Park and competed for Team Paul Mitchell in the North American Sport Karate Association (NASKA) for five years and was awarded the 1999 Black Belt magazine's Competitor of the Year. She has worked on over 60 movies and TV shows. She was honored by the Diamond in the Raw foundation for her work as a stuntwoman. She teaches every Sunday morning at Barnes Park.

## LITTLE STARS BAND

Little Stars Band is a youth band formed by guitar students from Math Clinic. The members come from different elementary schools and share a passion for music. They rehearse together every week under the guidance of their teacher, Mr. Peng Chen. The guitar band performance consists of three pieces, including two famous Japanese songs, "Shiki no Uta" and "Sakura," as well as the classic song "Autumn Leaves." Additionally, Mr. Chen Peng will perform a solo piece.



## MICHELLE MALIZAKI

Michelle Malizaki is the Ichiban Mom of comedy - a vintage Japanese immigrant mom delivering joyful, high-energy stand-up with polite-savage punchlines hidden inside her sweetness. She's a Japanese-American

stand-up comedian, writer, and podcaster based in Los Angeles, performing regularly across Southern California.

# PERFORMERS



## MAID ACADEMY CAFÉ

Maid Academy @maidacademycafe is celebrating 10 years of charming audiences with its delightful mix of music, dance, and character-driven performances. Home to a cast of maids and butlers, each performer chooses their own persona, songs, and schedule, bringing authenticity and heart to every show.



## MOE↗AGE!

Moe↗Age! is a maid-idol group from Los Angeles with the mission to spread moe maid magic & high tension ↗↗ idol culture in the US. The ♡ six-member group has many unique personalities, and you can meet them at their permanent home cafe, Asayoru Maid Cafe! Their setlist will get you jumping from the start to the end! Let's burn up the stage!

## OHANA POLYNESIAN DANCERS

Ohana Polynesian Dancers are a group of family members connected by family values. They are united together sharing the Polynesian culture through music, dance and entertainment. Based in Diamond Bar/Walnut California, under the direction of Thela Leimamo Nink and daughter Christa Kamalani Nink, professional dancer, teacher/choreographer. They provide lessons for all age groups and dance levels. Lessons are offered in Tahitian, Hawaiian, Maori poi balls, drumming, and ukulele. Members have traveled and performed at Tokyo Disney, China, Tahiti and Hawaii. They are available for booking private shows, festivals, parades, etc.



## RYUJIN TAIKO

Ryujin Taiko was formed as a creative outlet for taiko drumming with an emphasis for experimenting with modern ways to enhance the classical Japanese drums. Members performed with one of North American earliest taiko groups, as well as learned from some of the most reputable instructors in the community. This background has given them a well-rounded education in taiko form and their goal is to bring fun and energy to their performances, as well as to connect and interact with their viewers to give them an entertaining taiko experience.

## RYUKYUKOKU MATSURI DAIKO

Ryukyukoku Matsuri Daiko is modeled on the traditional Okinawan obon festival drum dancing called "eisa". The performers dance and drum simultaneously to an exciting blend of traditional and contemporary Okinawan and Japanese music. The organization was founded in 1982 in Okinawa. It also has chapters in mainland Japan, Argentina, Brazil, Peru, Bolivia, and Hawaii. The Los Angeles chapter was established in 1995 and has performed at such venues as the Nisei Week Parade, Taiko Gathering, Coronation Ball, the Cherry Blossom Festival in Monterey Park, the U.S. Japan Expo, Los Angeles and the L.A. County Fair.

## SAGE GRANADA PARK UNITED METHODIST CHURCH JAPANESE SCHOOL TAIKO

Sage Granada Park United Methodist Church Japanese Language School Taiko Group was founded in 2016 after purchasing 4 taiko drums with a grant from the Japan Business Association to enrich the school's cultural studies. Our students are led by Chiaki Toda and Evelyn Goto, both of whom performed extensively with L.A. Taiko Ichiza and have more than 40 years of experience teaching and performing taiko between them. The 2025-26 members are: Ella Eddow, Raegan Fujimoto, Kenley Fujimoto, Vivian Gu, Max Hurtado and Leighton Lopez.

# PERFORMERS / EXHIBITORS



## SAN GABRIEL VALLEY YOUTH SYMPHONY

The San Gabriel Valley Symphony is a grassroots movement serving as a cultural engine rooted in community advocacy, civic leadership, and celebration, extending live music into the third spaces that define daily life through flagship symphonic productions and neighborhood performances. Built by people from the San Gabriel Valley, the SGV Symphony, alongside businesses, civic leaders, and community stakeholders together empower a collective ecosystem in which the performing arts strengthen economic vitality, deepen regional pride, reinforce shared identity, and position the San Gabriel Valley as a cultural epicenter within Southern California.



## STRAWBERRY SUNDAY

Strawberry 🍓 Sunday is an idol unit that aims to share their love of music and bring joy to those cheering them on. From singing to dancing, the members love performing a diverse range of genres to celebrate idol culture and get the

crowd moving! Come join us on our journey to sweeten everyone's day one stage at a time and let's celebrate everyday like it's Sunday Funday with Strawberry Sunday!

## TAIKOPROJECT ACADEMY

Located in downtown LA's historic Little Tokyo district, the TAIKOPROJECT Academy offers taiko drumming classes for students of all ages. The TAIKOPROJECT Academy is Los Angeles' premiere taiko school, established in 2002 by Bryan Yamami and Masato Baba to perpetuate the art form of taiko in America. The Academy offers classes in taiko drumming to the general public for all ages and all skill levels. Since its inception, hundreds of children and adults have studied taiko at the Academy under the tutelage of highly-trained instructors from the TAIKOPROJECT. The Academy is currently led by Director Courtney Deguchi.

## TORRES KENPO KARATE

Sensei David Torres is a 10th degree black belt with 59 years of experience in the martial arts. He earned his original black belt from a dojo in Monterey Park. That inspired him to pursue a career in karate to help pass on the teachings, customs and traditions of an ancient art of self-defense that promotes peace. Sensei David Torres has been teaching karate to children and adults for over 53 years and has had a Kenpo karate studio in Pico Rivera for 47 years. His demonstration team has performed across the United States and has been performing at the Cherry Blossom Festival for more than 25 years.



## STEPHANIE YANEZ

As a J-Pop Music Artist with years of experience in the Japanese and Anime Entertainment industry, Stephanie Yanez takes you on a musical journey through her memories

of watching retro Anime classics such as Sailor Moon and Neon Genesis Evangelion, eagerly anticipating Animerica and Newtype USA magazine issues, staying up late to watch Toonami, and immersing herself in the virtual world of TinierMe, all while embodying the spirit of a kawaii magical girl. Stephanie has been touring the U.S. and Japan since her professional debut with NBC Universal Entertainment Japan.

## CALVIN YOSHITAKE - MAGI CAL

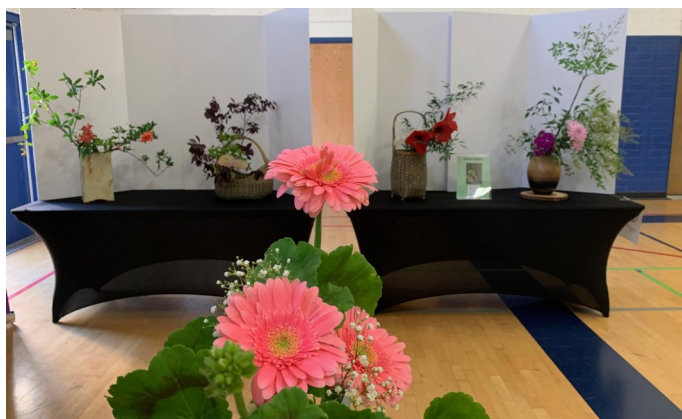
Calvin Yoshitake (also known as Magi Cal) is a Los Angeles-based comedian and magician who is a member of the world-famous Magic Castle in Hollywood. He has over 24 years of experience and is known for combining comedy with magic.



## YUJOU DAIKO

The meaning of Yuujou is friendship, which is indicative of the camaraderie and shared goals that formed this group in 2012. Yuujou Daiko is dedicated to mastering the beautiful art of taiko and bringing the high energy & powerful sounds to communities throughout the greater Los Angeles area. The group has played at events including the Long Beach Aquarium, Temple City Camellia Festival, Chinese Firecracker Run, Clippers Half-time, Legoland, and more! Yuujou Daiko is currently based at the Japanese Cultural Institute in Gardena.

# EXHIBITORS/DEMONSTRATORS



## IKEBANA - LESSONS

Ikebana is the art of beautifully arranging cut stems, leaves, and flowers in vases and other containers that evolved in Japan over seven centuries. The choice of what flowers to arrange is guided by the desire to create harmony between flower and container and to find flowers that blend in well with its surroundings. Although layer after layer of flowers are used in Western floral arrangements, in *ikebana*, the key consideration is to use as few stems and leaves as possible in composing elegant contours that highlight the flowers' beauty.

Valeria of IkebanaLessons.com has been practicing Ikebana for thirty years. She graduated from the Sangetsu School of Flower Arranging, Kado Sangetsu-Ryu, as an instructor in June of 1993. The Sangetsu School was established on in 1972, inspired by the flower arrangements of Mokichi Okada. [ikebanalessons.com](http://ikebanalessons.com)



## FUGETSU-DO

Fugetsu-Do has been a family owned and operated confectionery store in Little Tokyo since 1903. Japanese rice cakes, more commonly known as mochi (rice cake) and manju (sweet bean filled rice cake), are the staple. The shop, which is currently operated by Brian Kito, is located on East First Street in the Historic District of Little Tokyo.

**WORLD DIVINE LIGHT ORGANIZATION** - Information and demonstrations of spiritual purification art of Divine Light, a type of healing energy that originated from Japan. [worlddivine-light.org](http://worlddivine-light.org)

## KIMEKOMI NINGYO DOLLS: HIROFUMI KAI

Hisako Matsumoto will present Kimekomi from Hirofumi Kai. Kimekomi dolls were first crafted about 250 years ago, during the Genbun Era in Japan. Kimekomi dolls are also known as Gamo Dolls, or Willow Dolls (Yanagi Ningyou). The Founder of Hirofumi Kai, Mataro Kanabayashi, revived the orthodox technique of the Gamo doll. In reviving this method, the modern craft of the unique Mataro doll was established.

The method of producing the doll's figure has changed from that of the early days, when the body was carved from a pieces of wood. Nowadays, we blend Paulownia sawdust with paste to produce the model. As a result of this, Kimekomi dolls are now available to many people.



## KANESAKA YUKARI KAI

Klmetoml is a traditional Japanese doll-making technique where fabric is carefully pressed into carved grooves in a wooden form, creating elegant, layered garments without sewing. Yukari Kai, founded in L979, teaches and preserves this art through classes, exhibits, and community events, sharing Japanese cultural traditions across the United States.



## SUNNY AND JUDY SEKI

Sunny Seki is the author/illustrator of three Japanese children's books: *Yuko-chan and the Daruma Doll*, *The Last Kappa of Old Japan* and *The Tale of the Lucky Cat*, which won awards from NAPPA Parenting Publishing and Creative Child Magazine. Born in Tokyo in 1947, he graduated from Nihon Daigaku with a degree in Photography. He came to the United States, where he studied Illustration at Pasadena Art Center of Design. For the next 32 years he operated Sunny Seki Photography. Now he presents his books and other Japanese folktales at community events. Sunny and wife Judy have nine children and live in San Gabriel.

# EXHIBITORS/DEMONSTRATORS



## JAPANESE TEA CEREMONY - URASENKE SCHOOL AND ICHINOBUYU SENCHADO

The Japanese tea ceremony (cha-no-yu, chado or sado) is a traditional ritual influenced by Zen Buddhism in which tea is prepared by a skilled practitioner and served to a small group of guests in a tranquil setting. Cha-no-yu, literally "hot water for tea", usually refers to a single ceremony or ritual, while sado or chado refer to the study or doctrine of tea ceremony.

Since a tea practitioner must be familiar with the production of types of tea, with kimono, calligraphy, flower arranging, ceramics, incense and a wide range of other disciplines and traditional arts in addition to his or her school's tea practices, the study of tea ceremony takes many years and often lasts a lifetime.



## DR. SUSAN PERRY

Dr. Susan Perry will exhibit Zen brush art and conduct two demonstrations. She has studied shodo (the ancient Japanese practice of artistic calligraphy) and aikido (a modern Japanese martial art) for decades. Dr. Perry will introduce Zen brush as a traditional Japanese art form but will focus on the healing properties of the practice.

She learned from Japanese

Zen monks trained in Japan who taught that the practice strongly emphasized relaxation.

## LONG BEACH SUMI-E

The Long Beach Sumi-e Group fosters an understanding of and appreciation of sumi-e, traditional Japanese ink wash painting.



## ORIGAMI

Origami is the traditional Japanese art of paper folding. The word origami is derived from 2 Japanese words - 'oru' which means to fold and 'kami' which means paper. With right paper folding techniques, you can watch interesting shapes and creations unfold before your eyes. Origami is a craft that requires patience and precision but it is also an art that demands creativity.

Join artists **David Dao** and **Michael Sanders**  
for origami demonstrations and lessons.



# COMMUNITY BOOTHS

**AARP** - AARP works to support individuals and families by providing resources, advocacy and opportunities to stay informed and connected. [aarp.org](http://aarp.org)

**ALIGN WITH PURPOSE** - Align with Purpose is a non-profit organization focused on providing awareness and finding funding for the rebuilding of the Barnes Park Pool.

**ALIGNMENT HEALTH** - We are a Medicare Advantage plan and will be providing information on our benefits for seniors and the community.

**API RISE** - Asian Pacific Islander Reentry and Inclusions through Support and Empowerment is a nonprofit organization founded to support and empower formerly and currently incarcerated APIs or impacted family members. [api-rise.org](http://api-rise.org)

**ASSOCIATION OF TURKISH AMERICANS - ATATURK CULTURAL CENTER** - We are a Turkish cultural organization that would like to improve cross cultural understanding. We will teach children Turkish arts and crafts. [atasc.org/atamla](http://atasc.org/atamla)

**BODHI MEDITATION** - Bodhi Meditation teaches people how to live with compassion and peace, fostering harmony with all beings. We offer easy-to-learn, effective meditation methods that help practitioners enjoy health and happiness. [putila.org](http://putila.org)

**CENTER FOR THE PACIFIC ASIAN FAMILY** - CPAF will be offering free activities and games to engage the community and share information about our resources. [cpaf.ngo](http://cpaf.ngo)

**CHINESE CHRISTIAN FAMILY CHURCH** - CCFC is a community founded in 1969 and established upon the love and salvation of our Lord Jesus Christ. We plan to provide crafts for children, a prayer sakura tree for guests to write down prayer requests on paper cherry blossoms and an invitation to upcoming church events. [ccfcalh.org](http://ccfcalh.org)

**CITIZENS CLIMATE LOBBY** - CCL lobbies state and federal legislators for climate legislation. We will talk about how people can contact their legislators, laws they may be interested in and what they can do in their own homes. [citizensclimatelobby.org](http://citizensclimatelobby.org)

**CITY OF HOPE - TOBACCO CESSATION PROGRAM**  
- City of Hope is a comprehensive cancer medical center, where healthcare, research and public health services are the focus. We will disseminate cancer prevention/early detection health educational materials.

**E-LOGIX ACADEMY TUTORING CENTER** - A local afterschool tutoring program catering to students and parents in Monterey Park and surrounding cities, we strive to provide a different learning experience through providing a fun, interactive and small group learning atmosphere. [elogixacademy.com](http://elogixacademy.com)

**GARVEY SCHOOL DISTRICT EARLY LEARNING DEPARTMENT** - Early education programs for pregnant women and children birth to 5 years old. [garvey.k12.ca.us](http://garvey.k12.ca.us)

**GREEN DOT PUBLIC SCHOOLS** - Green Dot Public Schools is a nonprofit public charter network dedicated to preparing students for college, career and life. At Ánimo Ellen Ochoa Middle School and Ánimo Oscar De La Hoya High School, we provide a rigorous, supportive learning environment. [greendot.org](http://greendot.org)

**HISTORICAL SOCIETY OF MONTEREY PARK** - We promote the study and appreciation of local history as it relates to the City of Monterey Park. Our goal is to encourage the public to be more involved in local city historical preservation. [mpkhistoricalsociety.org](http://mpkhistoricalsociety.org)

**HONG TAO TZE FOUNDATION** - We will distribute literature to raise community awareness about love, peace, conscience and holistic wellness. [www.taijimen.org](http://www.taijimen.org)

**JAPANESE AMERICAN NATIONAL MUSEUM** - The mission of the Japanese American National Museum is to promote understanding and appreciation of America's ethnic and cultural diversity by sharing the Japanese American experience. As the national repository of Japanese American history, JANM creates historical and arts exhibitions, public programs, documentaries, and curriculum that illuminate the stories and the rich cultural heritage of people of Japanese ancestry in the United States. [janm.org](http://janm.org)

**LOS ANGELES PORT POLICE** - Los Angeles Port Police is a specialized law enforcement agency responsible for protecting the port of Los Angeles. We are hiring full-time police officers. [www.portoflosangeles.org](http://www.portoflosangeles.org)

**MONTEREY PARK CHAMBER OF COMMERCE** - The city's leading business association, focused on revitalizing local commerce and community connections, we will engage attendees about local businesses and upcoming community events. [montereyparkchamber.org](http://montereyparkchamber.org)

**MONTEREY PARK BRUGGEMEYER LIBRARY** - Library staff and volunteers will provide information on story times for children, teen activities, literacy and citizenship classes, adult workshops and other library programs and services. You will also be able to register for a new library card. [montereypark.ca.gov/Library](http://montereypark.ca.gov/Library)

**MONTEREY PARK FIRE DEPARTMENT** - The MPFD has an immense pride and deep sense of responsibility in providing the city with the best public protection service there is to offer. It is our commitment to excellence to stay diligent in our ability to provide an unwavering service.

**MONTEREY PARK MUSTANGS** - We are a nonprofit year-round basketball program supporting youth development through teamwork, sportsmanship and community. We will be hosting activities for kids and families which may include basketball games, crafts and coloring or storybook reading. [www.mpmustangs.org](http://www.mpmustangs.org)

# COMMUNITY BOOTHS

**MONTEREY PARK POLICE DEPARTMENT** - The MPPD takes pride in our ability to prevent crime, interact with the community, and apprehend criminals. Our department personnel strives to provide the finest service to our community.

**MYMSPANDA** - My Ms Panda will promote our Chinese language program and provide cultural craft activities for the community. [www.facebook.com/Mymspanda](http://www.facebook.com/Mymspanda)

**NATIONAL ALLIANCE ON MENTAL ILLNESS (NAMI) SAN GABRIEL VALLEY** - NAMI is the nation's largest grassroots non-profit dedicated to improving the lives of persons, family members and friends affected by mental illness. We offer peer-led support groups, education classes and presentations at no cost to the participants. [namisangabrielvalley.org](http://namisangabrielvalley.org)

**PARENTS ANONYMOUS** - Parents Anonymous is a family strengthening organization dedicated to uplifting the family unit and child safety by supporting the growth of all parents, children and youth, through Shared Leadership® strategies, leading to positive outcomes for everyone. We will be sharing our Care Navigation Services and Medi-Cal peer support specialist program. [parentsanonymous.org](http://parentsanonymous.org)

**PFLAG SAN GABRIEL VALLEY ASIAN PACIFIC ISLANDER CHAPTER** - We are a supportive community for Asian Pacific Islander LGBTQ+ people and their loved ones. We provide support, education and advocacy to create an inclusive and affirming society. [flagsgvapi.org](http://flagsgvapi.org)

**SAGE GRANADA PARK UNITED METHODIST CHURCH LANGUAGE SCHOOL** - SGPUMCLS students learn how to speak, read and write the Japanese language and learn about Japanese culture. We have certification from the Western Association of Schools and Colleges, so high school students can earn high school credits.

**SCAN HEALTH PLAN** - We will provide information about Medicare and MAPD as well as free giveaways and prizes.

**SGPUMC TROOP 286/PACK 329** - Boy Scout Troop 286 and Pack 329 will have a booth for recruitment.

**SOCCER SHOTS LA NORTH** - Soccer Shots is an engaging children's program with a focus on fundamental soccer skills, fun and character development. Our curriculum aligns with CA Early Childhood Education standards and delivers a world-class approach designed by professional athletes, soccer coaches and early childhood experts. [www.soccershots.com/lanorth](http://www.soccershots.com/lanorth)

**SOZENJI BUDDHIST TEMPLE** - Sozenji Buddhist Temple in Montebello was founded in March 1971 and has not only become a place for Buddhist worship, meditation and learning, but also serves as a community and cultural center. We will offer information about Japanese culture and Buddhist culture as well as origami, omikuji (Japanese Fortune Telling) and omamori (Japanese amulets/charms) sales. [www.sozenjibuddhisttemple.weebly.com](http://www.sozenjibuddhisttemple.weebly.com)

**WELBE HEALTH** - We provide all-inclusive medical care to the elderly at no cost to our participants. [welbehealth.com](http://welbehealth.com)

# CRAFT VENDORS



**ALKALAMITY** - Stickers, art prints, greeting cards and keychains. [www.etsy.com/shop/alkalamity](http://www.etsy.com/shop/alkalamity)

**ALLIE & ELLIE DOGGIE TREATS** - Allie and Ellie are youth vendors who make and sell homemade organic doggie treats along with Sanrio, Labubu and Pop Mart items and stationery. [www.allieellieshop.com](http://www.allieellieshop.com)

**ART WITH HEART** - Homemade original fused glass art, home goods and jewelry. [insta:alexis.daniels.144](https://www.instagram.com/alexis.daniels.144)

**ARWAMA** - Featuring Warbie Yama, the original character and art created by artist Arut Tantasirin, products include plushies, pouches, t-shirts, hoodies, button pins and art prints. [www.warbieyama.com](http://www.warbieyama.com)

# CRAFT VENDORS



**ASCOTT DESIGN** - Handcrafted jewelry with fused dichroic glass, semi-precious stones, salt and freshwater pearls and Swarovski crystals.

**AVERY'S LITTLE JEWEL STUDIO** - Handmade earrings, bracelets, necklaces, keychains and water bottle charms

**BABY SNACK TIME** - Bilingual children's books, cultural wooden toys, bamboo pins, plushies, puzzles and stickers. Babysnacktime.com

**BY AMELIE** - Handmade resin jewelry with real flowers. www.shopbyamelie.com

**CHAMPIONS TRADING** - Unique gift items from around the world including decor, jewelry and accessories that produce smiles and make memories.

**CHIBI-CHAN HANDMADE** - Handmade tote bags, handbags, wallets, zipper pouches, keychains, bag charms, dog bandanas and hair scrunchies. IG:@chibichan.handmade

**CHIZI PALETTE** - Original illustrated characters and pastel-inspired designs on handmade stickers, postcards, greeting cards, bookmarks, art prints and keychains. www.chizipalette.com

**CLICKY STATION** - 3D printed full character fidget clickers based on anime and video games. clickystation.myshopify.com

**COMI HANDMADE JEWELRY** - Handmade jewelry, hair accessories, ornaments, knitting accessories, charms and hand painted flower pots with flowers and plants

**CREATIONS BY LETY** - Handmade necklaces, bracelets, earrings and rings. www.instagram.com/creationsbylety

**DEB W365** - Handcrafted jewelry made with resin, wire, beads and charms. www.deb365.com

**DESIGNS BY SETSUMI** - Kawaii Los Angeles Dodgers and Japanese stickers, shirts, enamel pins and tote bags. Designsbysetsumi.com

**ELEGANT BEAD DESIGN** - Handmade jewelry sets with Swarovski crystals, cultured and freshwater pearls, semi-precious stones and Burmese and Soo Chow jade as well as handbags and cat and dog bags

**EMERGENCY DND** - Original and fan art fantasy and DND pinups including stickers, shirts, prints and collectible acrylic standee toys of anime, video games and original characters. emergencydnd.etsy.com

**FONKY MONKY** - Handmade and upcycled one of a kind clothing and jewelry. fonkymonky.com

**FOUR HEARTS HANDMADE** - Handmade crochet and sewn items as well as plushies, blankets, bags, key chains and decorations

**GET BENT AND HAMMERED** - Handmade and personalized jewelry in gold, silver and stainless steel. All items are hand-engraved on the spot for customers. Getbentandhammered.etsy.com

**HAWAIIAN BREEZ** - Hawaiian reusable bags, totes and backpacks. IG:HawaiianBree12

**HENNA ARTS** - Henna body art with 100% natural henna paste, decorate with glitter, honey and lemon juice as sealers. humaira'beautysalon

**HONEY HAMSTORE** - Original illustrations drawn and printed onto stickers, posters, key chains, prints and badge reels. honeyhamstore.com

**HYDE HERMIT STUDIO** - Original art, tiki button-up shirts, enamel pins, play mats, plushies and charms. hydehermitstudio.com

# CRAFT VENDORS



**INGKARAT APPAREL** - Japanese-inspired kimonos and shorts. [www.ingkarat.com](http://www.ingkarat.com)

**JENNY'S CORNER EMPORIUM** - Terrariums, purses, bags, aprons, flannels, crochet items and home decor. IG: @jennyscorneremporium

**JIGGY'S CRAFTS** - Cups, pens, keychains, jewelry boxes, notebooks and stationery

**JUNKO KUBOTA** - Handmade Swarovski crystals dressed shirts, needlework, bags, iPad holders and warming pillows. Instagram @masko4u

**KIEUTIE PIE** - Original art mainly focused on cute animals and food: art prints, pins, stickers, key chains and plushies. [kieutiepie.com](http://kieutiepie.com)

**KLUV CRAFTING** - Handmade bags, pouches and accessories using traditional and modern Japanese, kimono and locally sourced fabric including cherry blossom prints.

**KRISTY M LEE ART & SOLUSTRANCE** - Two local independent artists making handmade crochet goods, original art prints, stickers and tote bags. [www.kristymleeart.com](http://www.kristymleeart.com)

**KYOTO ARTS** - Authentic Japanese traditional silk apparel for men and women - kimono, haori, yukata, juban, obi, zori and handbags. [dearvanilla.etsy.com](http://dearvanilla.etsy.com)

**LONG LASTING FLORET** - Fresh blooming cherry blossom and quince branches, fresh honey, dried arrangements and succulents

**MAI BOHO LIFE** - Bohemian style jewelry, home décor, air plant hangers, plant décor and plushies

**MIDDLE AGE MADNESS** - Handmade crafts including money leis, character felt gift cards/money holders, bowl cozies, bookmarks, embellished hand towels and aprons, bags, eyeglass cases, ring holders, lanyards, etc.



**MINERVA'S JEWELRY SHOP** - Handmade jewelry phone chains, pens, Pop Up sockets, some Sanrio and Pop Mart products and crystals

**MOTHER OF HEALING** - Spiritual crystals, stones, dream catchers, resin art and crystal jewelry

**NYOOT** - Original art and goods that celebrate food, anime and culture - enamel pins, desk mats, charms, tote bags, art prints and more - our work celebrates diverse cultures and invites self-expression in everyday life

**POCHISTUDIOS** - Original stationery brand specializing in adorable everyday products to brighten your day with cute, funny, chubby and colorful stickers, washi tape, notepads, memo pads, tote bags and lifestyle accessories. Our art is inspired by the Chibi style culture. [www.pochistudios.com](http://www.pochistudios.com)

**RAFFI** - Handpainted t-shirts and tops

**RAKKII** - Handmade jewelry and accessories, t-shirts and stickers

**RAMIREZ TOYS** - Plushies, bubbles, car toys, Barbies, toy dogs, etc.

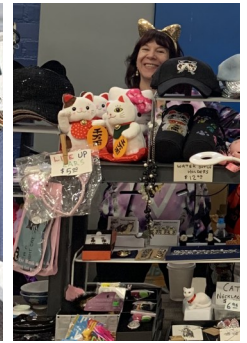
**ROBERTO JAIME MEXICAN ACCESSORIES** - Mexican jewelry, sandals, ponchos, crochet items, hats and plants

**ROUGH DRAFT LEATHER CRAFT** - Purveyor of hand-made leather goods such as wallets, bookmarks, key chains and more

**SACHIKO GOES RACING** - AAPI children's race car book series Sachiko Goes Racing, and cherry blossom-themed jewelry and accessories. [sachikogoesracing.com](http://sachikogoesracing.com)

**SAKE SISTAHs** - Hawaiian sweatshirts, insulated bags, tote bags, backpacks, Old Guys Rule men's t-shirts, hanging glass and turtle wind chimes, wooden beach signs, and Japanese print bags and totes

# CRAFT VENDORS



**SANJI CRAFT** - Vintage and resale crochet and collectibles.  
[Instagram.com/sar](https://www.instagram.com/sar)

**SENUMAN CALLIGRAPHY** - Botanical enamel keychains, pins, earrings, art prints and greeting cards.  
[senimancalligraphy.com](https://www.senimancalligraphy.com)

**SQUNCHY** - The Squnchy DIY Station is a hands-on experience where guests create their own squishy ball. Squnchy premade squishies are handmade, food-inspired creations with soft textures and playful details. We will have a Japanese-themed squishy. [squnchyball.com](https://www.squnchyball.com)

**STELLAR 3D STUDIO** - Personally printed, unique, high quality 3D creations ranging from articulated dragons and figures to keychains and home décor. [Stellar3DStudio.com](https://www.Stellar3DStudio.com)

**STORY SPARK** - Original science, tech and pop culture-inspired graphic t-shirts and art prints. [storyspark.com](https://www.storyspark.com)

**SUZAN** - Suzan is a Zen Brush artist of 30 years who holds a Godan in Shodo, Nidan in Sosho. She has also studied Aikido for 48 years and her new book, *The Hidden Power of Aikido*, will be for sale.

**THE ART OF JOV** - 5x7 art prints and various dimensions of canvas prints. [Instagram.com/theartofjov](https://www.instagram.com/theartofjov)

**THE HAPPY NOTE** - A family shop that sells handmade crafts including crochet coasters, face masks, beaded jewelry, hand towels, pouches, magnets, computer sleeves, beaded chains for glasses and hair scrunchies. [thehappynote.com](https://www.thehappynote.com)

**THE KOGEI SHOP** - Japanese artisanal tableware and home goods for the modern home. All products are hand-made in Japan, one-of-a-kind pieces that marry beauty and utility. [thekogeishop.com](https://www.thekogeishop.com)

**THE QUIRKY DRAGON STORE** - Handcrafted crochet dolls, keychains, hair accessories, home décor and dog toys, as well as stickers, bookmarks and small prints. Some items are inspired by the fictional characters, creatures and worlds of movies, books, games and television.  
[thequirkydragonstore.etsy.com](https://www.thequirkydragonstore.etsy.com)

**THE TRAVELING CAT (PAWS & PALS)** - Japanese lucky cat and Hello Kitty merchandise as well as cat clothing, jewelry and gift items

**THOMAN CRAFTS** - Pokemon terrariums, glass cups, pens, scrunchies, headbands, keychains, cat toys, aprons, ornaments and tote bags

**TR & CO.** - Handmade Hawaiian-inspired jewelry and framed quilled paper art

**TRAM PLANTASTICS** - Live succulents arrangements.

**TUZI NEKO** - Stickers, prints, plushies, apparel and other lifestyle goods featuring our original characters as well as anime fan art. [www.tuzineko.com](https://www.tuzineko.com)

**VICKI ARTS & CRAFTS** - Prints, postcards, bookmarks, tote bags and original pin designs as well as handmade ceramic accessories. [vickywangart.com](https://www.vickywangart.com)

**XARINESCA** - Japanese-inspired handmade artwork from anime and pop culture designs including stickers, charms, desk mats, buttons, prints and pins. [xarinesca.com](https://www.xarinesca.com)

**YA BER & DD** - YaBer & DD reimagines pop culture, daily work and life through the perspective of YaBer the duck and DD the gyrfalcon. Blending illustration, animation and craftsmanship, the brand brings original designs to life through handmade plushies, stationery, accessories and apparel. [www.yaber-dd.com](https://www.yaber-dd.com)

**YEE PAINTS** - Custom pet portraits in oil pastels in sizes 5x7 and 8x10

# COMMERCIAL BOOTHS

**CLEVER CARE HEALTH PLAN** - We will promote Medicare insurance plans for seniors offered by the company. [clevercarehealthplan.com](http://clevercarehealthplan.com)

**EYE CANDY GEAR** - We pride ourselves in delivering a quality product for an affordable price, offering polarized sunglasses for real life, including high-end luxurious and sporty transparent patterned frames, UV400 protection and timeless unisex designs built for driving, hiking, sports and beach days. [www.geteyeandygear.com](http://www.geteyeandygear.com)

**FOREST LAWN MEMORIAL PARK** - With locations in Los Angeles, Orange and Riverside counties, we have been trusted throughout Southern California for over 100 years. We will provide information on pre-planning with cemetery properties and funeral services. [forestlawn.com](http://forestlawn.com)

**GATCHA DROP** - We will offer a fun selection of toys, collectibles and small gifts through interactive gashapon capsule machines. Each capsule contains a surprise item, providing an engaging, family-friendly experience for all ages. [www.instagram.com/thrillit](http://www.instagram.com/thrillit)

**GLOBAL ENERGY SERVICES INC.** - Information about energy efficiency and utility rebate programs from Southern California Gas Company. [cleosave.com](http://cleosave.com)

**HYATT VACATION CLUB** - Marketing of Hyatt Resort properties. [www.hyattvacationclub.com](http://www.hyattvacationclub.com)

**JAPANESE AMERICAN COMMUNITY CREDIT UNION** -- A full-service \$60+ million financial institution serving nearly 9,000 members/owners throughout most of Southern California and beyond. Financial services, ATM services, mobile office and free giveaways. [jacomcu.org](http://jacomcu.org)

**KALEO MARKETING** - Vacation and travel marketing for Wyndham Resorts/Travel & Leisure hotel brands. [kaleomarketing.com](http://kaleomarketing.com)

**RENEWAL BY ANDERSEN** - Our windows are long lasting and energy efficient. Free in-home consultations on window and door replacement. [renewalbyandersencorp.com](http://renewalbyandersencorp.com)

**ROSE HILLS MEMORIAL PARK** - We honor legacies with everlasting tributes in an unmatched setting of natural and landscaped beauty. We will be sharing information on advance planning funeral services. [www.rosehills.com](http://www.rosehills.com)

**SEEN HEALTH** - Seen Health is a PACE program located in Alhambra which provides comprehensive care for seniors 55+ who have Medi-Cal. [www.seenhealth.org](http://www.seenhealth.org)

**T-MOBILE** - Showcasing cell phones, tablets, wearables, accessories and audio and providing information on rate plans and services, data and home internet. [www.t-mobile.com](http://www.t-mobile.com)

**SEEN HEALTH** - Seen Health is a PACE program located in Alhambra which provides comprehensive care for seniors 55+ who have Medi-Cal. [www.seenhealth.org](http://www.seenhealth.org)

**WINNING WAYS** - Promotions for Wyndham Resorts. [winningwaysusa.org](http://winningwaysusa.org)

**WOW WOW SOCKS** - Cute socks from Korea and Japan. [www.wowcutieshop.com](http://www.wowcutieshop.com)

**WUKONG EDUCATION** - We offer educational consulting and interactive logic games for children and will be providing free gifts and online classes. [www.wukongsch.com](http://www.wukongsch.com)

# KIDS' CRAFTS

There will be free craft activities for the kids. Come check out all the cool things you can make and take home!



# FOOD COURT



## **BABY CASTELLA**

Amami-ya

## **BBQ CHICKEN & MOCHI SKEWERS**

### **MATCHA TEA DRINKS**

Yakitori Yado

## **BBQ SKEWERS - GRILLED GLUTEN SKEWERS**

### **TANG HULU**

Mojo Tanghulu

## **CHICKEN TERIYAKI - WONTONS**

### **SODAS - BOTTLED WATER**

Cherry Blossom Festival Committee

## **EGG SANDWICHES - CHIFFON CAKE**

## **MATCHA, SPARKLING & COFFEE DRINKS**

Pillow Talk

## **DIM SUM - AGUAS FRESCA - NOODLE SOUP**

Sunday Café

## **GLAZED & FLAVORED NUTS**

## **HAWAIIAN SNACKS & CANDY**

Dem' Nutz

## **GRILLED HIBACHI CHICKEN, STEAK, SHRIMP**

Bachi Yaki

## **JAPANESE CHEESECAKE - COOKIES**

Uncle Tetsu

## **KETTLE, CARAMEL, CHEESE &**

### **BUTTER POPCORN**

Nena's Gourmet Popcorn

## **MANJU - CANDY**

Fugetsu-Do

## **OKONOMIYAKI - KINTOKI SHAVED ICE**

### **MISO SOUP**

Ikoi Japanese Cafe

## **ONIGIRI - FRIED CHICKEN WINGS**

### **RICE CAKES - FRENCH FRIES**

Onigiri Edo

## **PORK CUTLET SANDWICHES - KATSU BITES**

### **FURIKAKE FRIES - ICE CREAM SANDO**

Kondo Sando

## **PUPUSAS - ASADA FRIES - CALI BURRITOS**

### **PLATANOS FRITOS PUPUSAS**

Salvi Nation

## **SOFT-SERVE ICE CREAM - FUNNEL CAKES**

### **CHURROS - NACHOS**

Bizuri Ice

## **SPAM MUSUBI**

Mission Valley Free Methodist Church

Boy Scouts Troop #365

## **TACOS - BACON-WRAPPED HOT DOG**

## **ASADA FRIES , NACHOS - CHICKEN TENDERS**

### **HOT CHEETO BIRRIA BOMBS**

Sofia's Kitchen

## **TAKOYAKI - FRIED CHICKEN - LEMONADE - LATTES**

Takoyaki

## **TWISTED POTATO - BBQ SQUID & BEEF BULGOGI**

Miister Potato

## **WAFFLES - RICE NOODLES - SUGAR CANE**

### **FRIED LAMB, BEEF, CHICKEN & SQUID**

### **BLACK TOFU SOUP**

Waffleland