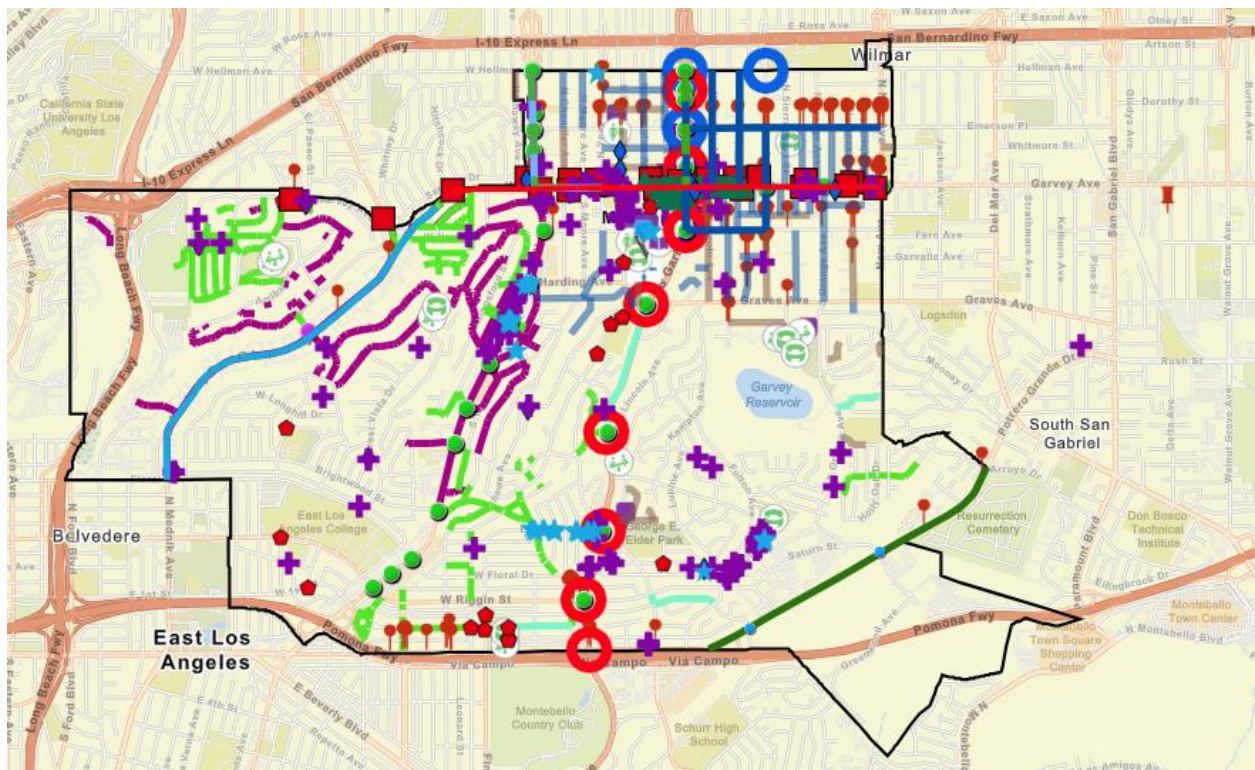


# CIP GIS Map Instructions

The Monterey Park Engineering Division developed an interactive Geographic Information Systems (GIS) map to inform the community about the various projects occurring in the City. Residents, businesses, and the general public is encouraged to navigate through the map to learn about ongoing improvements and potential impacts to the community.

The projects included on the ArcGIS Map are grouped by both fiscal year and type of project. Users can adjust their viewing options for each group or layer to see specific projects under selected categories. When selecting a project icon, users will be able to view project information such as type of project, estimated start and end dates, status, and assigned project manager.





## Step 1: How to view map

To access the City's ArcGIS map, users can visit the Public Works page on the City's [website](#) or click [here](#)


## Step 2: Search for projects by address

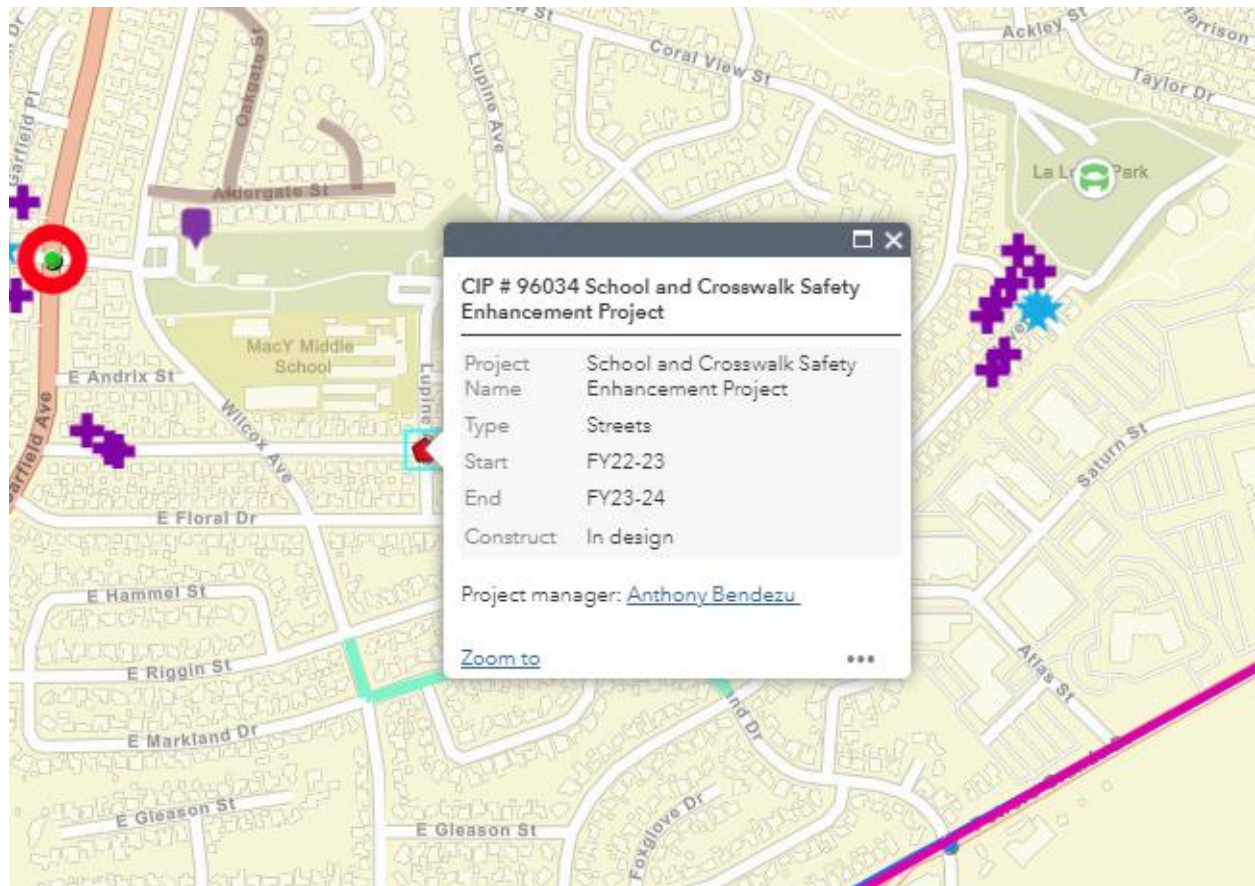
Within the ArcGIS Map, users can use the search bar in the top left corner of the application to locate a specific address within the city.

### Step 3: How to turn Layers on/off

The map includes layer lists to view projects by fiscal year or project type. To view all projects by fiscal year, select the Layer List icon located at the top right corner of the map and click the  View Layer List icon. To hide projects for a specific type, users can do one of the following things, either uncheck the box next to a specific project or click the  View Layer List icon and select the option to turn all layers off.

### Step 4: How to view project information

Each CIP project is identified by a colored symbol and is listed on the legend. To view the legend, select the Legend icon located at the top right corner of the map and click the  View Legend icon on. Also, if a user wants to view information for a specific project they can click on the projects symbol within the map to view basic information on the project.



## Step 5: How to zoom to a specific project

To zoom to a specific project, click on the **⋮** Show item details icon which is to the right of each project within the layer list and select Zoom To.



If anyone has any questions regarding the ArcGIS map or an individual project, contact the Public Works department at 626-307-1320 or use the link in the popup to email the project manager.